



MIPADIO Multi-Function I/O Module

Specifications:

Analog Inputs

Number of Analog Inputs: 16 single-ended or 8 differential.

Resolution: 16 bits

Input Full Scale Range: $\pm 10V$, $\pm 5V$, 0-10V, 0-5V.

Conversion Time: 1.2 μ sec per channel

Prog. Gain: 1, 2, 4, 8, 16, 32, 64, 128.

Input Impedance: $>1M\Omega$

Analog Outputs

Number of Analog Outputs: 4

Resolution: 16 bits

Output Full Scale Range: $\pm 10V$, $\pm 5V$, 0-10V, 0-5V.

Digital I/O

Number of Digital I/O: 68 programmable mode and direction.

Interrupts: Up to 10 digital lines may be programmed to interrupt on either rising or falling edge.

Counter/Timers: Two 24 bit counter/timers

Meets IP specifications per ANSI/VITA 4-1995

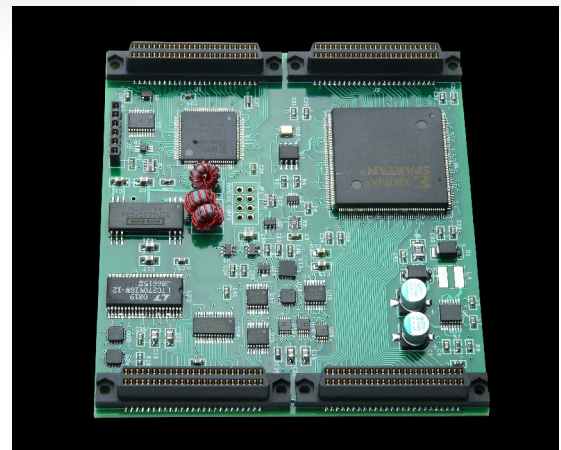
Power Requirements

+5 Volts @ 300mA

Environmental

Operating Temperature: -40 to 85 °C

Storage Temperature: -40 to 125 °C



The MIPADIO is a multi-function double wide IP module offering 16 analog inputs, 4 analog outputs, and 68 digital I/O points. The unit is a drop-in replacement to the SBS IPADIO. The digital I/O section consists of 3 MC68230's programmed onto a single FPGA. Improvements over the older IPADIO include:

- 16 bit resolution on analog inputs and outputs.
- 2 extra analog outputs.
- $\pm 10V$ FSR option for analog inputs and outputs.
- Lower power consumption.

Merlin Embedded

151 Sawgrass Corners Dr., Suite 105
Ponte Vedra, FL 32082 (866) 700 7704
www.merlinembedded.com

