



MIPADC40M Analog Input Module

Specifications:

Number of Analog Inputs: 40 single-ended or 20 differential.

Resolution: 16 bits

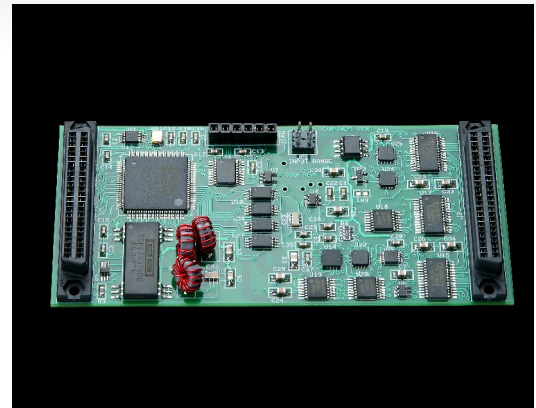
Input Full Scale Range: $\pm 10V$, $\pm 5V$, 0-10V, 0-5V.

Conversion Time: 1.2 μ sec per channel

Programmable Gain: 1, 2, 4, or 8

Input Impedance: $>1M\Omega$

Meets IP specifications per ANSI/VITA 4-1995



Features

- Onboard $\pm 15V$. No external supplies required to run $\pm 10V$ full scale range
- Calibration References
- Either external or software conversion trigger
- Conformal coating is standard on all units

The MIPADC40M is a drop-in replacement to the Acromag® IP320 and the SBS IPAD40. The customer's existing software written for the IP320 and IPAD40 will run the MIPADC40M. The I/O connections are exactly the same.

Upgrades include the onboard DC-DC converter eliminating the need for an external $\pm 15V$ supply and 128K of RAM that may be used to store data.

Power Requirements

+5 Volts @ 20mA

+12Volts @ 100mA

Environmental

Operating Temperature: -40 to 85 °C

Storage Temperature: -40 to 125 °C

Merlin Embedded

151 Sawgrass Corners Dr., Suite 105
Ponte Vedra, FL 32082 (866) 700 7704
www.merlinembedded.com

All trademarks are the property of their respective owner. Please note that Merlin Embedded is not associated with any of the companies for whom our products are drop-in replacements.