



9470 Digital I/O Module

Specifications:

Digital I/O Channels: 80

Input Voltage Range: 0-5VDC

Input Threshold: Logic high is 2.0V minimum. Logic low is 0.8V maximum.

Output Current Sink: 100mA per channel.

Output Voltage Range: 0-5VDC

VME Specifications

Meets VME Specifications Revision C.1 IEEE Std. 1014-1987

A16:D32 BLT Slave

Address Modifier Code 29, or 2D HEX.

1K consecutive byte locations, base address configurable within 64K Short I/O space.

Board size: 6U

Power Requirements

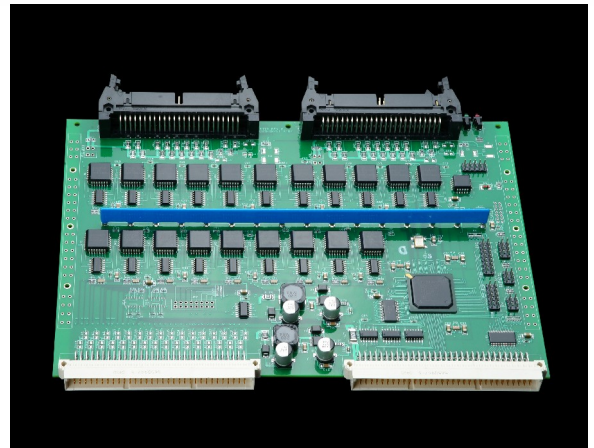
+5 Volts @ 100mA with all outputs off.

Environmental

Operating Temperature: -20 to 85 °C

Storage Temperature: -40 to 125 °C

Shock: 25g, 11ms on all axis



The 9470 Digital I/O Module offers the following features:

The unit may be configured as a drop-in replacement for the Acromag® AVME9470 or AVME9440.

I/O points accessible through the front panel connector and the VME P2 connector.

Four interrupt modes:

- change of state
- pattern match
- edge triggered
- level triggered

Twelve 16 bit counter/timers.

Conformal coating is standard on all units.

Conduction-cooled version available.

All trademarks are the property of their respective owner. Please note that Merlin Embedded is not associated with any of the companies for whom our products are drop-in replacements.

Merlin Embedded
10415 Willow Ridge Loop
Orlando, FL 32825
(866) 700 7704
www.merlinembedded.com