



MIPDISO Isolated Digital I/O Module

Specifications:

Number of I/O: 32 isolated solid state outputs/32 optically isolated inputs

Voltage Range: $\pm 60V$

Output ON current: 75mA per channel

Output response time: 3ms max for turn on and turn off

Input Voltage Range: $\pm 4V$ to $\pm 18V$, $\pm 16V$ to $\pm 40V$, $\pm 38V$ to $\pm 60V$

Input response time: turn on time 7 μ sec, turn off time 20 μ sec.

Interrupts: Change of state or level

Meets IP specifications per ANSI/VITA 4-1995

Features

- Reverse polarity protection
- 750mA output current sink
- Software programmable interrupts
- Input hysteresis
- Failsafe power-up
- Conformal coating is standard on all units

Power Requirements

+5 Volts @ 150mA

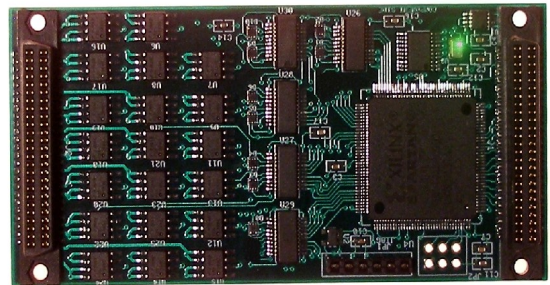
Environmental

Operating Temperature: -40 to 85 °C

Storage Temperature: -40 to 125 °C

Merlin Embedded

151 Sawgrass Corners Dr., Suite 105
Ponte Vedra, FL 32082 (866) 700 7704
www.merlinembedded.com



The MIPDISO Isolated Digital I/O Module is a drop-in replacement for the Acromag® IP440 and IP445 combined into one product. The customer's existing software written for these products will run the MIPDISO. The I/O connections are exactly the same.

Upgrades include:

- 750mA current sink per channel
- Interrupts available on all inputs
- Replaces both Acromag® IP440 and IP445, thus saving a slot on IP carrier.

All trademarks are the property of their respective owner. Please note that Merlin Embedded is not associated with any of the companies for whom our products are drop-in replacements.