



MIPADC16S Analog Input Module

Specifications:

Number of Analog Inputs: 16 differential.

Resolution: 16 bits

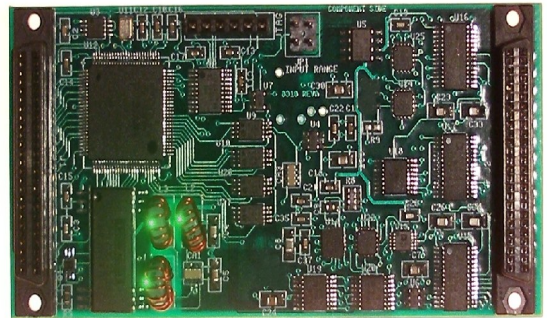
Input Full Scale Range: $\pm 10V$, $\pm 5V$, 0-10V
0-5V.

Conversion Time: 1.2 μ sec

Programmable Gain: 1, 2, 4, or 8

Input Impedance: $>1M\Omega$

Meets IP specifications per ANSI/VITA 4-1995



Features

- Onboard $\pm 15V$. No external supplies required to run $\pm 10V$ full scale range.
- 64K sample FIFO memory buffer.
- Calibration References.
- Either external or software conversion trigger.
- Conformal coating is standard on all units.

The MIPADC16S is a drop-in replacement to the Acromag® IP340. The customer's existing software written for the IP340 will run the MIPADC16S. The I/O connections are exactly the same.

Upgrades include:

- onboard $\pm 15V$
- 64K sample buffer
- 16 bit resolution
- input impedance not dependant on number of channels used.
- Full Scale Ranges of $\pm 10V$, $\pm 5V$, 0-10V, or 0-5V.

Power Requirements

+5 Volts @ 20mA

+12Volts @ 100mA

Environmental

Operating Temperature: -40 to 85 °C

Storage Temperature: -40 to 125 °C

Merlin Embedded
151 Sawgrass Corners Dr., Suite 105
Ponte Vedra, FL 32082 (866) 700 7704
www.merlinembedded.com

All trademarks are the property of their respective owner. Please note that Merlin Embedded is not associated with any of the companies for whom our products are drop-in replacements.