



## Merlin ColdFire® CPU Module

The Merlin ColdFire® CPU Module is a compact conduction-cooled Single Board Computer based on the Freescale MCF5484 Microprocessor. The standard unit offers 2 USB ports, 2 RS232 ports, ethernet, and a CAN-bus interface. An optional wireless ethernet card may be added.

Although slightly larger (5 x 6.75 inches) than the standard PC104 footprint, the unit offers a PC104+ interface that can support up to 4 I/O cards.

The CPU module runs from a single 6-28VDC power supply and typically requires less than 6W. Internal thermal layers on the pcb and wedgelocks installed on the edge of the board make the Merlin ColdFire® CPU Module ideal for ruggedized conduction-cooled applications.

### Features

512Mbytes DDR SDRAM

512Mbytes NAND Flash

Boots Linux 2.6. Support includes drivers for all peripherals

Real Time Clock

Temperature Sensor

Power Monitor for input supply voltage and all internally generated voltages

Two USB 2.0 Ports

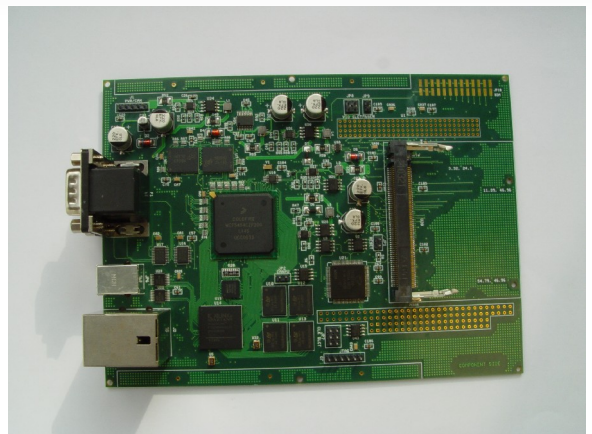
Two RS232 Ports

CAN-bus 2.0B

Ethernet

PC104+ Interface

Optional Wireless Ethernet



### Power Requirements

+12Volts DC @ < 1 A

### Environmental

Shock: 25g, 11ms on all axis

Operating Temperature: -40 to 85 °C

Storage Temperature: -40 to 125 °C

*Merlin Embedded*  
10415 Willow Ridge Loop  
Orlando, FL 32825  
(866) 700 7704  
[www.merlinembedded.com](http://www.merlinembedded.com)

Merlin  
Embedded